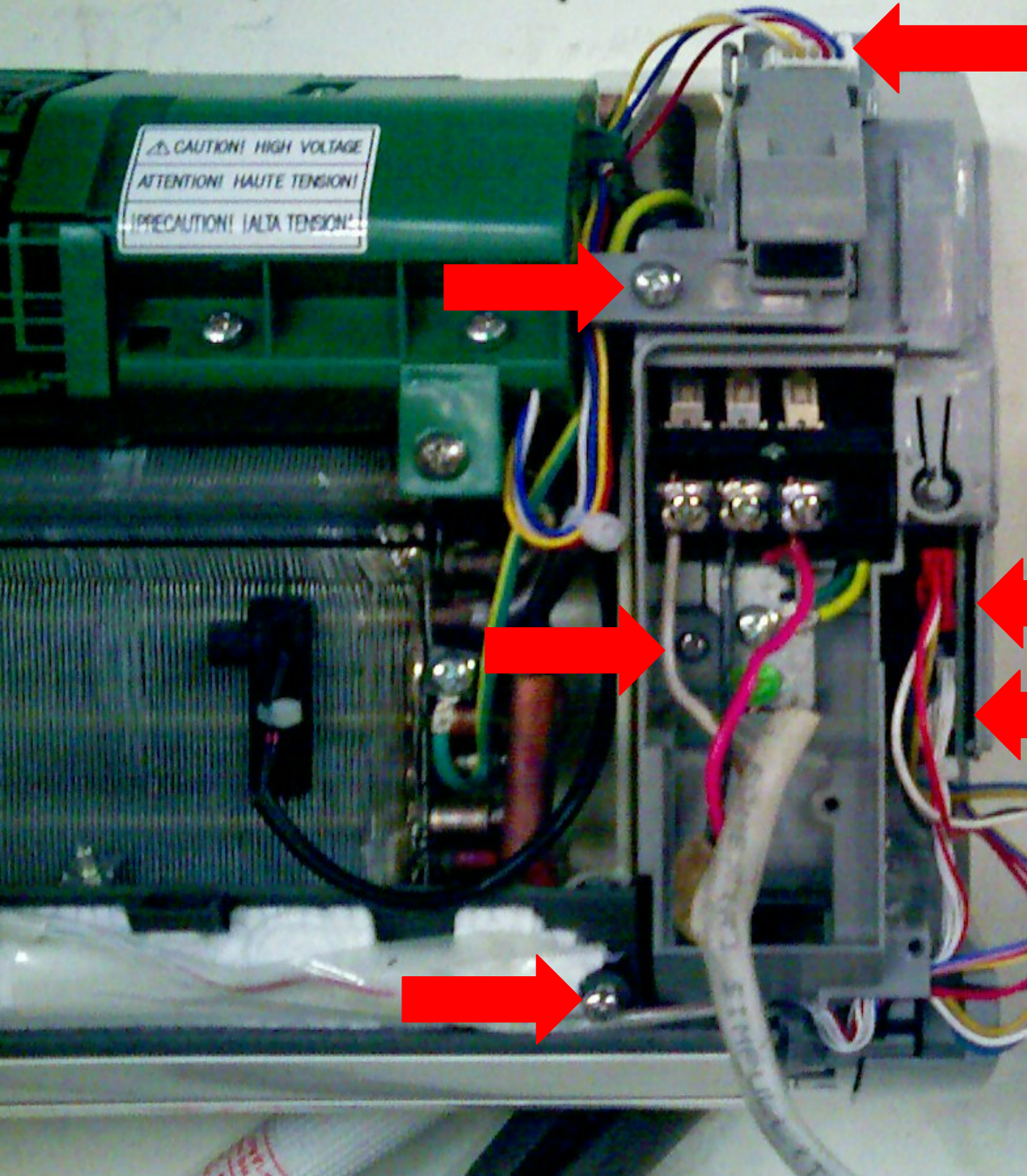


Fujitsu Small Wall Mounted Disassembly instruction



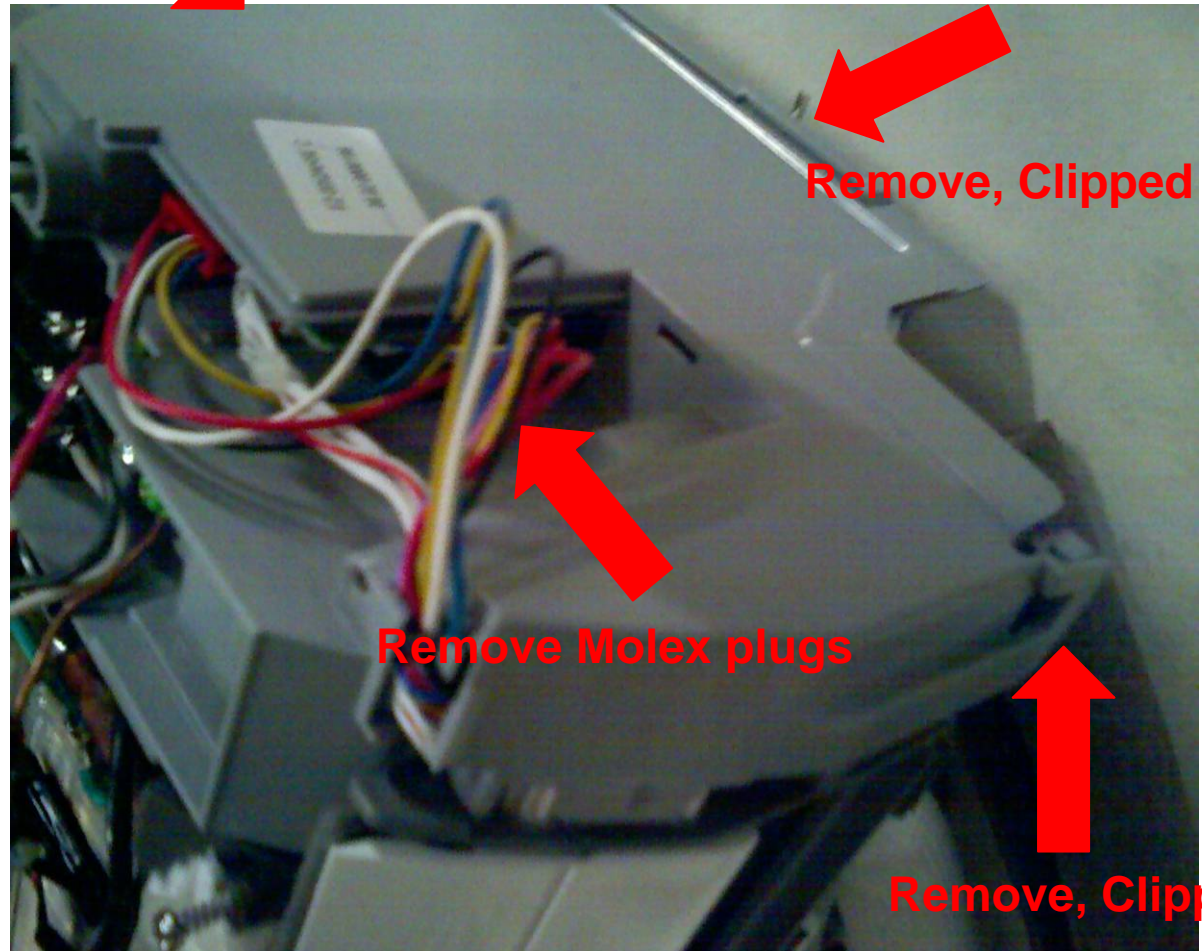


**Please disconnect ALL power
Before any work is performed**

RED ARROWS: are the points
That will be focused on, please
Remove any screws or molex
Plugs that pertain to the arrows.

CASING

Please continue to remove right side casing to expose PCB (printed circuit board). Remove it completely and continue on to motor.

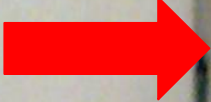


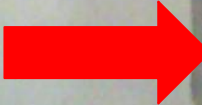
Remove, Clipped in

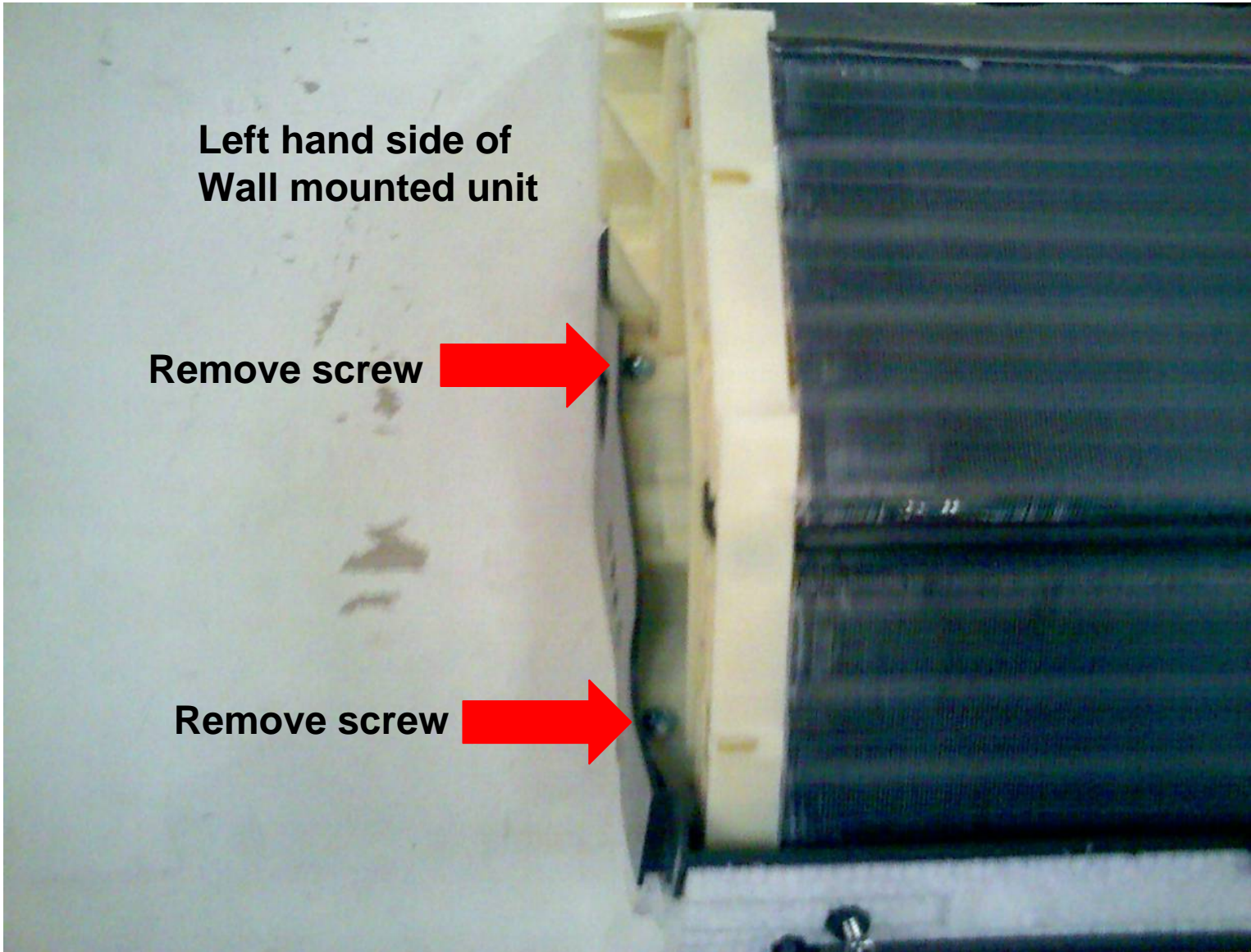
Remove Molex plugs

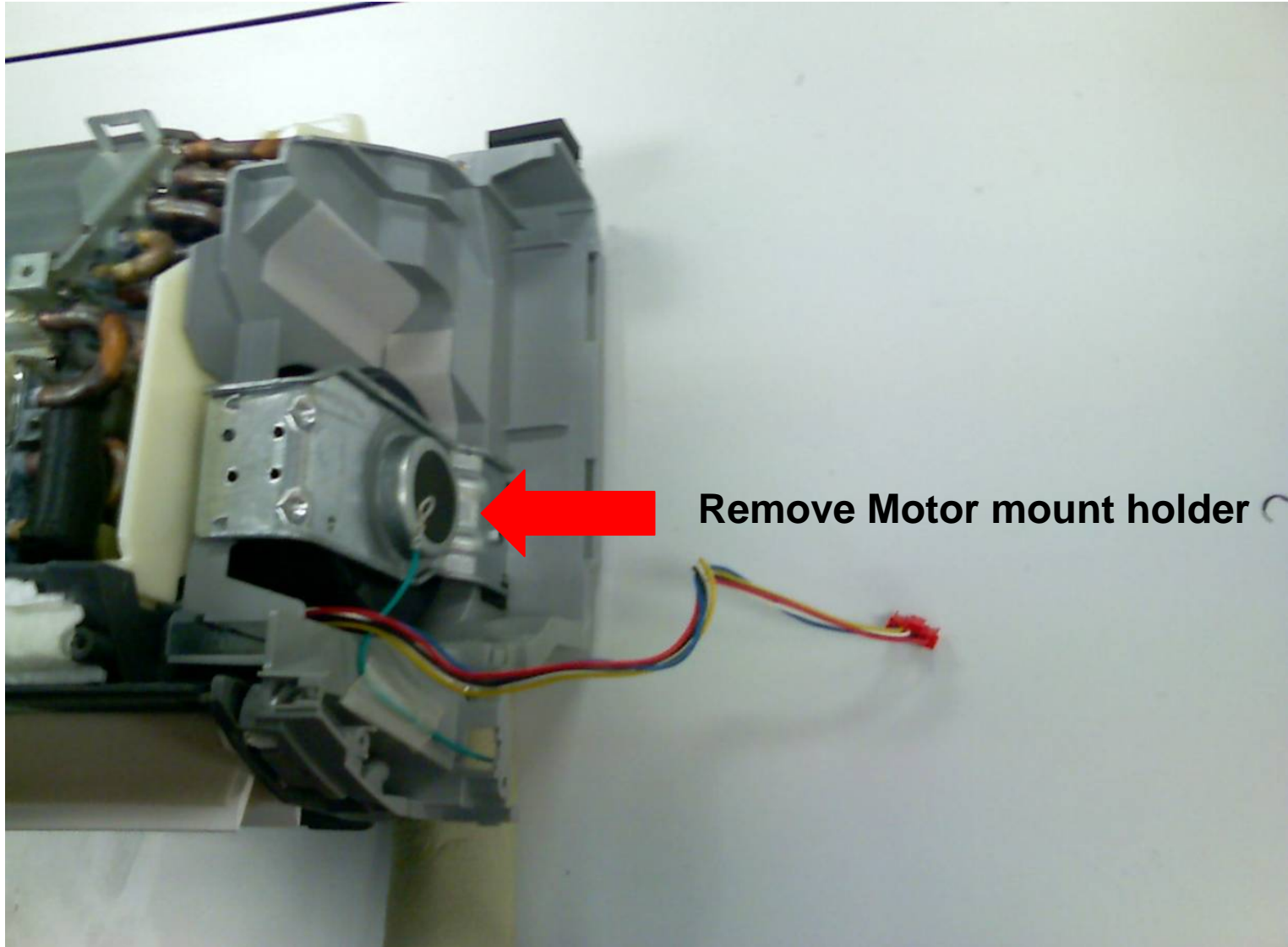
Remove, Clipped in

**Left hand side of
Wall mounted unit**

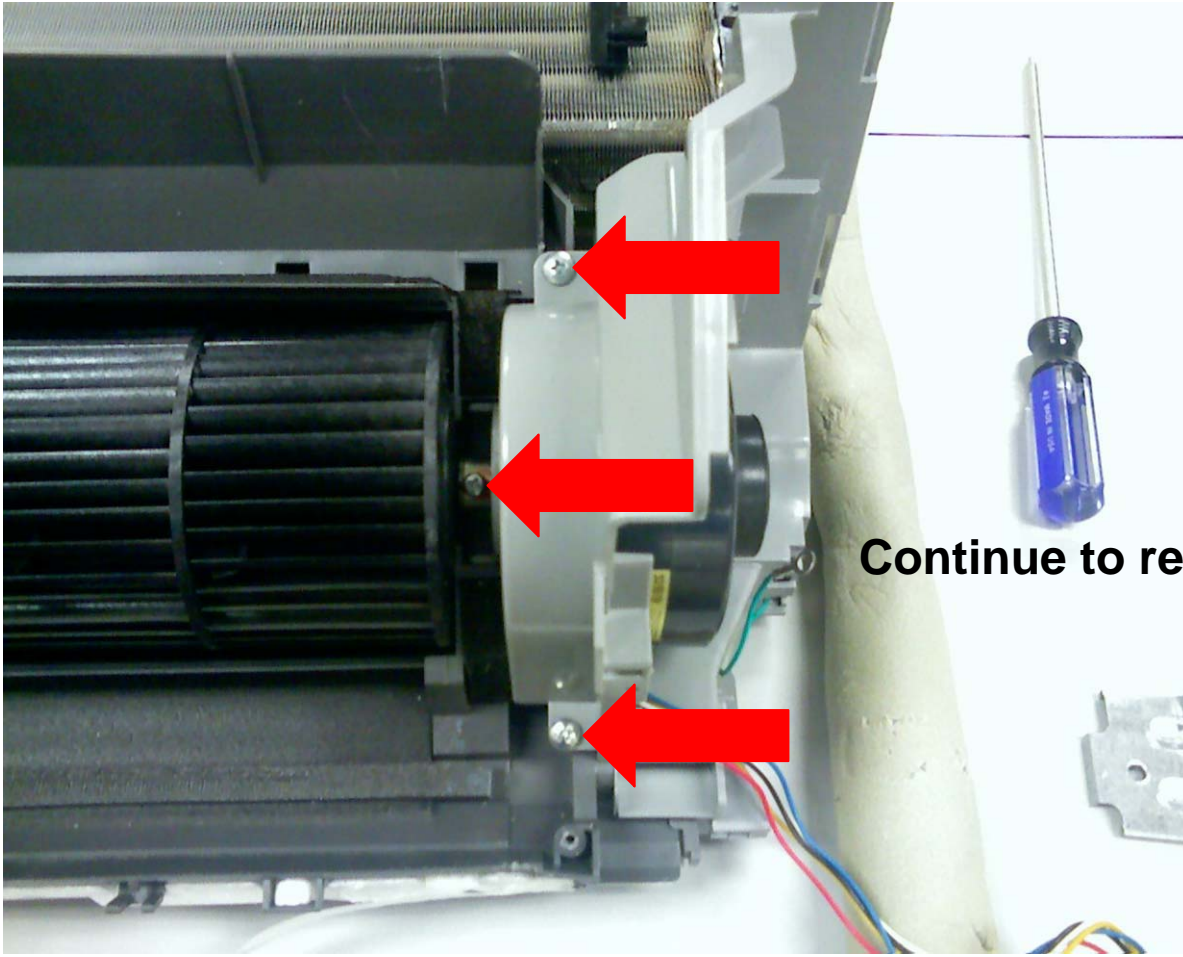
Remove screw 

Remove screw 



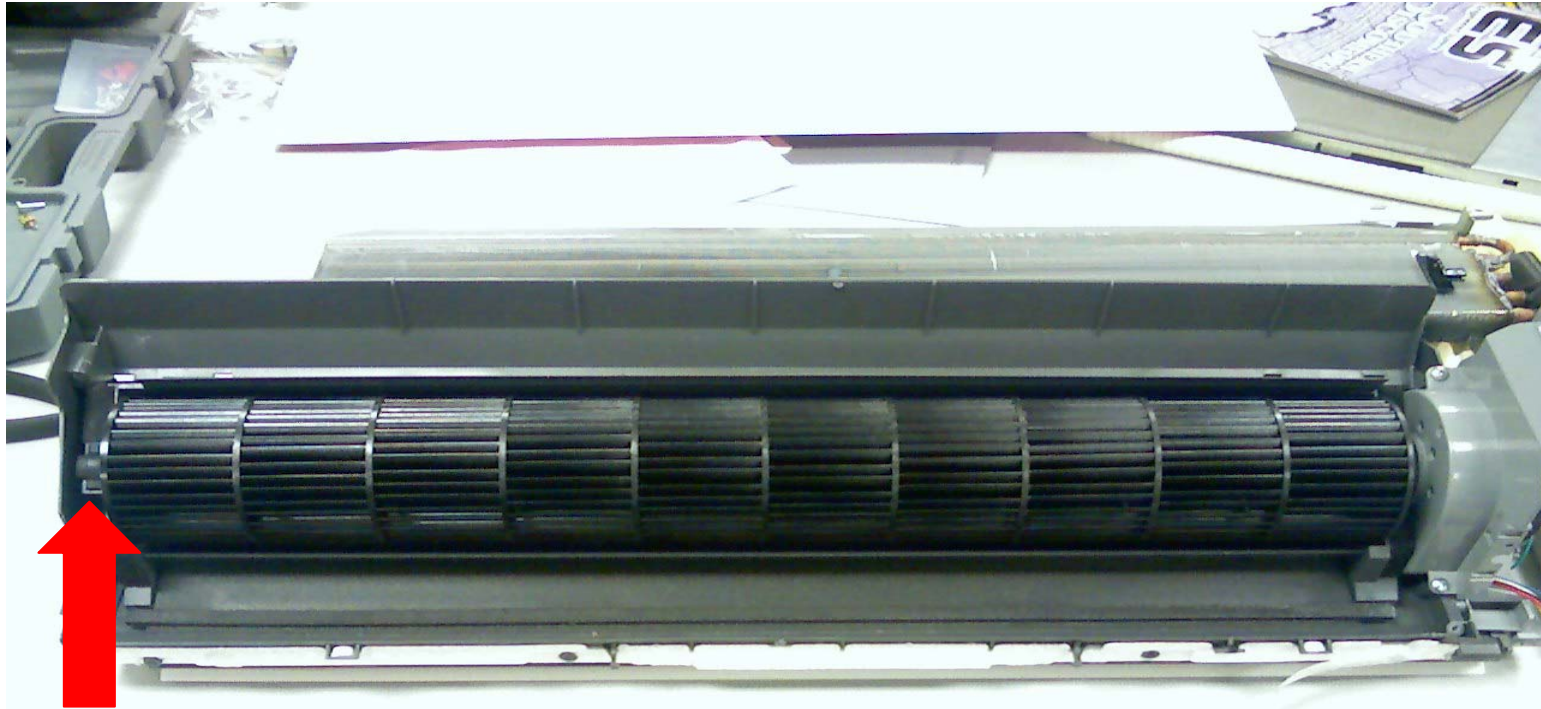


Remove Motor mount holder



Continue to remove screws

Fan Assembly Final Removal



Remove Rubber Grommet

